

# Guide rail adapter

**FOR GUIDE RAIL SYSTEMS FOR  
EXTERNAL BRANDS**

# The ease of replacement

Guide rail systems are used where sewage pumps are installed in stationary applications. Thanks to the easy location of the pump by means of the guide rail system it is not necessary to enter the sump.

The pump slides down the guide rails into the sump and connects automatically to the discharge pipe. Maintenance and pump replacement is carried out by raising the pump along the guide rails out of the sump by means of a lifting chain.

The replacement of another manufacturer's pump by a reliable waste water pump from Jung Pumpen used

to involve considerable effort as not every pump can be directly connected via the existing guide rail system.

Thanks to the **Pentair Jung Pumpen guide rail adapter**, this problem is now in the past. We can supply suitable adapters for most makes of pump which means that connection of a Jung Pumpen pump to the existing guide rail system is easily carried out.

Select the appropriate adapter from the following tables and you can easily replace the existing waste water pump with a Jung Pumpen pump.

## PUMP REPLACEMENT IN THE BLINK OF AN EYE



| Remove old pump



| Select the adapter which is suitable for the existing guide rail system



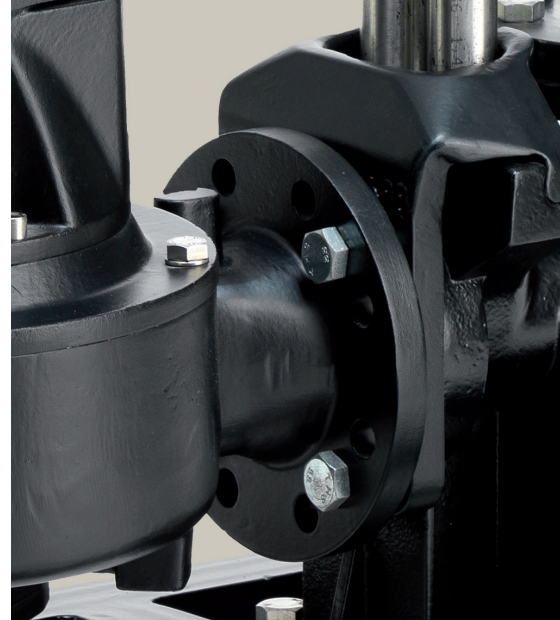
| Fit the adapter to the Jung Pumpen pump



| Couple the pump to the guide rail


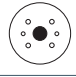




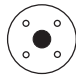


# The technical data



## SEWAGE PUMPS MULTICUT WITH CUTTING SYSTEM

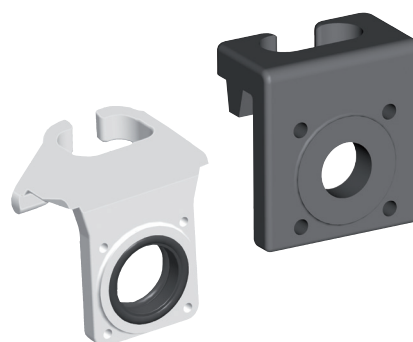
The following guide rail adapters are currently available as standard

Manufacturer	Adapter /	Can be combined with MultiCut
ABS Piranha	 <b>JP 40648</b>	08/2 M, Ex 20/2 M plus, Ex 35/2 M, Ex 36/2 M, Ex 45/2 M, Ex 75/2 M, Ex 76/2 M, Ex
WILO EMU FA	 <b>JP 41814</b>	
Flygt MP 3000	 <b>JP 41151</b>	
Flygt Compit Sump + MH 3000	 <b>JP 40540</b>	
KSB Amarex, DN40	 <b>JP 40646</b>	
KSB Amarex, DN 32 inclined position of Jung Pumpen pump	 <b>JP 41816</b>	
Kordes	 <b>JP 41815</b>	

Further adapters are available on request!

## SPECIAL VERSIONS

If the customer needs an adapter which has not yet been manufactured or is unclear as to the type needed, he can enter the relevant data in the check list (see last page). Alternatively the old bracket can of course be sent to Jung Pumpen for clarification..



## SEWAGE PUMPS MULTISTREAM/MULTIFREE

These pumps with vortex and single-channel type impellers are supplied with the following hole circle diameters.

Nominal	Hole circle		Number of bolt		Bolt size	
	PN 6	PN 10	PN 6	PN 10	PN 6	PN 10
DN 65	130	145	4	4	M12	M16
DN 80	150	160	4	8	M16	M16
DN 100	170	180	4	8	M16	M16
DN 150	225	240	8	8	M16	M16

All sewage pumps of the MultiFree and MultiStream series have standard flange dimensions complying with PN6/PN10 standard in accordance with DIN EN 1092-1.

This means that the connection to a competitor's guide rail system can often be carried out without the need to buy an adapter. There are however some exceptions to this.



# Check list - Know what it is all about



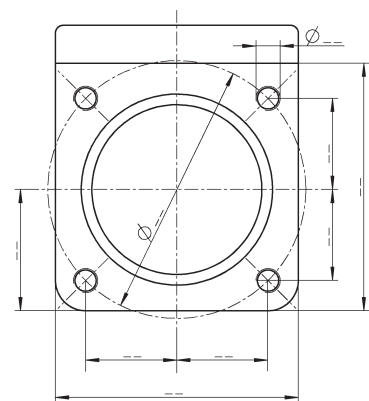
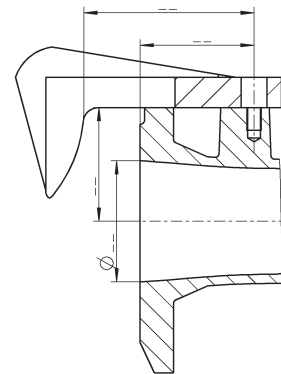
If no ready-made adapter is available (as per previous page) then we can make a suitable adapter for your current guide rail system. Please complete the check list below as much as possible and fax it to the fax number **+49 5204 17-107** or per E-Mail **info@jung-pumpen.de**. Please also include your full address to allow us to contact you.

## DATEN

Brand/Manufacturer:		e.g. ABS, Flygt
Pump type/Description		
Discharge connection DN / PN		z.B. DN 100/PN 6
<b>Code No.</b>		
Performance:		
Delivery head $H_{max} =$		[m]
Flow rate $Q_{max} =$		[l/s]
Power =		[KW]
Single unit		Please mark with a cross
Duplex unit		Please mark with a cross
Bracket dimensions - Bolt circle - Fastening:		
Bracket with thread		Please mark with a cross
Number of threaded holes:		
Klaue mit Durchgangsloch		Please mark with a cross
Number of straight holes:		

SEND OFF

If there are a number of holes please indicate pattern of holes.



Please enter dimensions if available.



JUNG PUMPEN GmbH | Industriestr. 4 - 6 | 33803 Steinhagen | Telefon +49 5204 170 | info@jung-pumpen.de | www.jung-pumpen.de

PENTAIR and PENTAIR JUNG PUMPEN are trademarks, or registered trademarks of Pentair or its subsidiaries in the United States and/or other countries.  
© 2023 Pentair Jung Pumpen