

Replacement claws & adapters

**FOR GUIDE RAIL SYSTEMS OF
OTHER BRANDS**

[JUNG-PUMPEN.COM](https://www.jung-pumpen.com)

EXCHANGE MADE EASY

Guide rail systems are installed where submersible pumps are operated stationary in sumps. Thanks to the simple fixing of the pump to the guide rail system, it is not necessary to enter the pump sump.

The pump slides along the guide pipes towards the bottom of the sump and is automatically connected to the discharge branch using coupling systems. For maintenance or replacement work, the pump is lifted out of the sump from above using a chain.

Replacing a pump with a pump from another manufacturer often involves considerable effort as not every pump can be easily connected to an existing guide rail system.

With **Pentair Jung Pumpen guide rail adapters**, replacing your wastewater pumps is a piece of cake. We offer a suitable adapter for many pump types, with which the coupling between the existing guide rail system and a pump from Jung Pumpen can be realised very easily and quickly..

The new **claws** which couple directly into the guide rail system of the **other manufacturer**, are particularly convenient.

Select the appropriate adapter or a suitable claw from the following tables and replace the existing sewage pump with a pump from Jung Pumpen without any problems.

CHANGING THE PUMP IN NO TIME AT ALL



| Remove old pump



| Select adapter to match the guide rail



| Fit the adapter to the pump




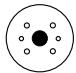
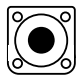

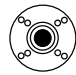

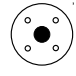
| Couple the pump to the guide rail



THE REPLACEMENT ADAPTER

Responsible use of resources is more important than ever in today's world. If the existing guide rail claw is still intact, you can simply continue to use it. Combined with our suitable adapters, refurbishing existing systems is **quick and easy**. If replacement is unavoidable, our new replacement claws offer a perfect solution.

The following guide rail adapters are available as standard for **MultiCut sewage pumps** with a cutting system:

Manufacturer	Adapter	Code No.	Combined with MultiCut
ABS Piranha		JP 40648	08/2 M, Ex 20/2 M plus, Ex 35/2 M, Ex 36/2 M, Ex 45/2 M, Ex 75/2 M, Ex 76/2 M, Ex
WILO EMU FA		JP 41814	
Xylem MP 3000		JP 41151	
Xylem Compit sump + MH 3000		JP 40540	
KSB Amarex, DN40		JP 40646	
KSB Amarex, DN 32 Inclined installation for- Jung Pumpen pump		JP 41816	
Kordes		JP 41815	

Further adapters on request!

NEW





THE REPLACEMENT CLAWS

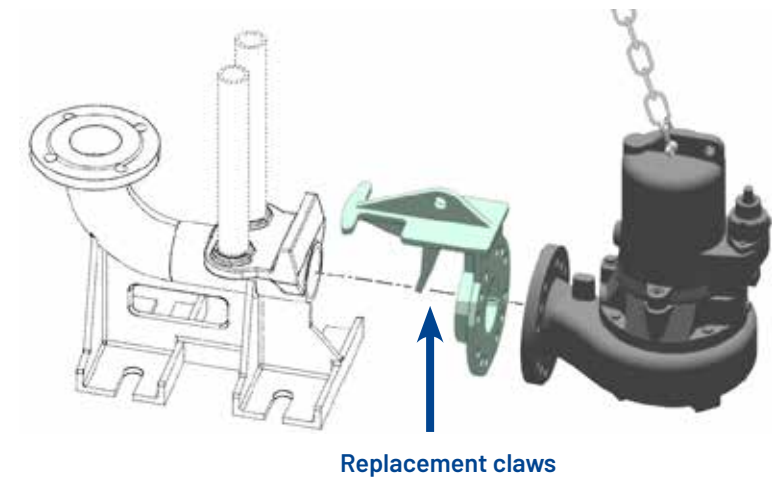
Pumps in existing sewer sumps are often operated for decades. If a pump has to be replaced with a new model – especially if it is a product from a different manufacturer – plant and civil engineers often encounter problems. The existing guide rail systems do not easily fit the new pumps. This leads to time-consuming adaptation work, increased costs and longer downtimes.

With our new **replacement claws**, we offer you a simple and cost-effective solution. The claws enable a precise connection between existing guide rail systems from other manufacturers and a new pump from Pentair Jung Pumpen. The replacement can be carried out without great effort and special tools.

The following **replacement claws** are available for the following wastewater pumps in the **MultiStream** and **MultiFree** series:

- › **Compatibility with common products of other manufacturers**
- › **Minimal installation time**
- › **Robust and durable construction thanks to high-quality materials**
- › **Sustainable utilisation of existing components**

Manufacturer	Replace-ment clawe	Code No.	can be used	Combined with Multistream/MultiFree
Xylem, DN 80		JP50864	for a guide rail and cable tension	MultiStream DN 80/DN 100 25/2 B... -300/2... 10/4 B ... -75/4 B... MultiStream DN 100 24/4 C... -300/4 C MultiFree DN 80 25/2 BW... - 100/2 BW... 15/4 BW... + 100/4 BW... MultiFree DN 100 10/4 CW... - 100/4 CW...
Xylem, DN 100		JP50865	for two guide rails	
KSB, DN 80		JP50911	for two guide rails and cable tension	
KSB, DN 100		JP50912	for two guide rails and cable tension	



All vortex impeller and channel impeller pumps in the **MultiStream and MultiFree** series are equipped with a two bolt circle diameter and have a standard PN6 / PN10 connection flange in accordance with DIN EN 1092-1. This means that they can often be connected to a competitor's guide rail without an adapter. However, exceptions prove the rule here too.

Nominal width	Bolt circle		Number of screws		Srews size	
	PN 6	PN 10	PN 6	PN 10	PN 6	PN 10
DN 65	130	145	4	4	M12	M16
DN 80	150	160	4	8	M16	M16
DN 100	170	180	4	8	M16	M16
DN 150	225	240	8	8	M16	M16



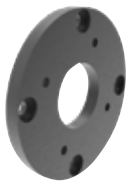
WHERE IS THE DIFFERENCE?

Replacement adapter:

The adapters are ideal if the existing guide rail claw is intact but the new pump from Pentair Jung Pumpen needs to be adapted to the existing system. They are a quick and cost-effective solution to facilitate pump replacement.

Replacement claws:

These come into play when the existing claw from the other brand is defective or no longer usable. They completely replace the old claw and provide a new and secure connection between the pump and the guide rail system.



CHECKLIST - WHAT IS IMPORTANT

If no suitable adapter (as per previous page) is available, a suitable adapter will be made for your existing guide rail. Please fill in the data in the table below and email this information to **sales.jp@pentair.com**. Make a note of your full address so we can contact you.

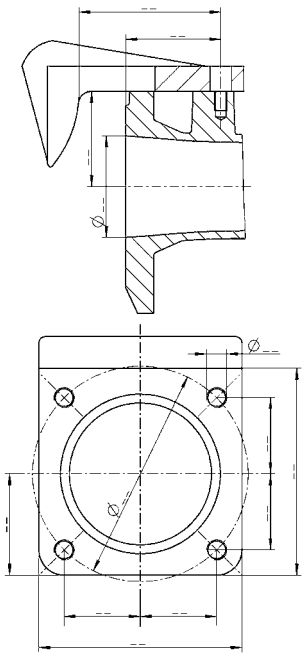


DATA

Brand / manufacturer:	e.g. ABS, Flygt	
Pump type / description		
Pressure connection DN / PN		e.g. DN100 / PN 6
Code no.		
Performance data		
Delivery head H_{max} =		[m]
Delivery rate Q_{max} =		[l/s]
Performance =		[KW]
Single unit		please tick
Duplex unit		please tick
Claw dimensions - Bolt circle - Fastening:		
Claw with thread		please tick
Number of threads		
Claw with through hole		please tick
Number of through holes:		

SENDER

For multiple holes
please indicate hole pattern.



Please enter the dimensions, if available.



JUNG PUMPEN GmbH | 33803 Steinhagen | Germany | Phone +49 5204 170 | info@jung-pumpen.de | www.jung-pumpen.com

PENTAIR and PENTAIR JUNG PUMPEN are trademarks, or registered trademarks of Pentair or its subsidiaries in the United States and/or other countries.
© 2025 Pentair Jung Pumpen