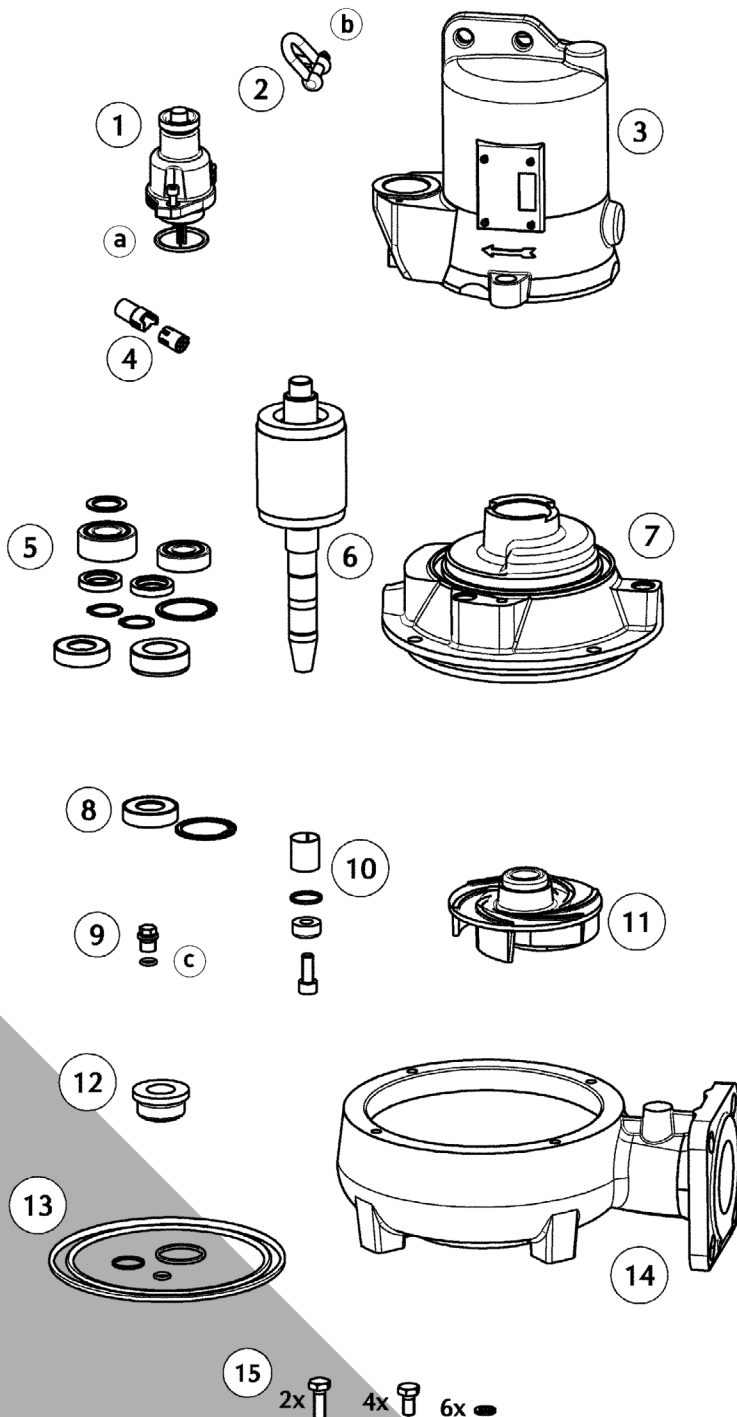


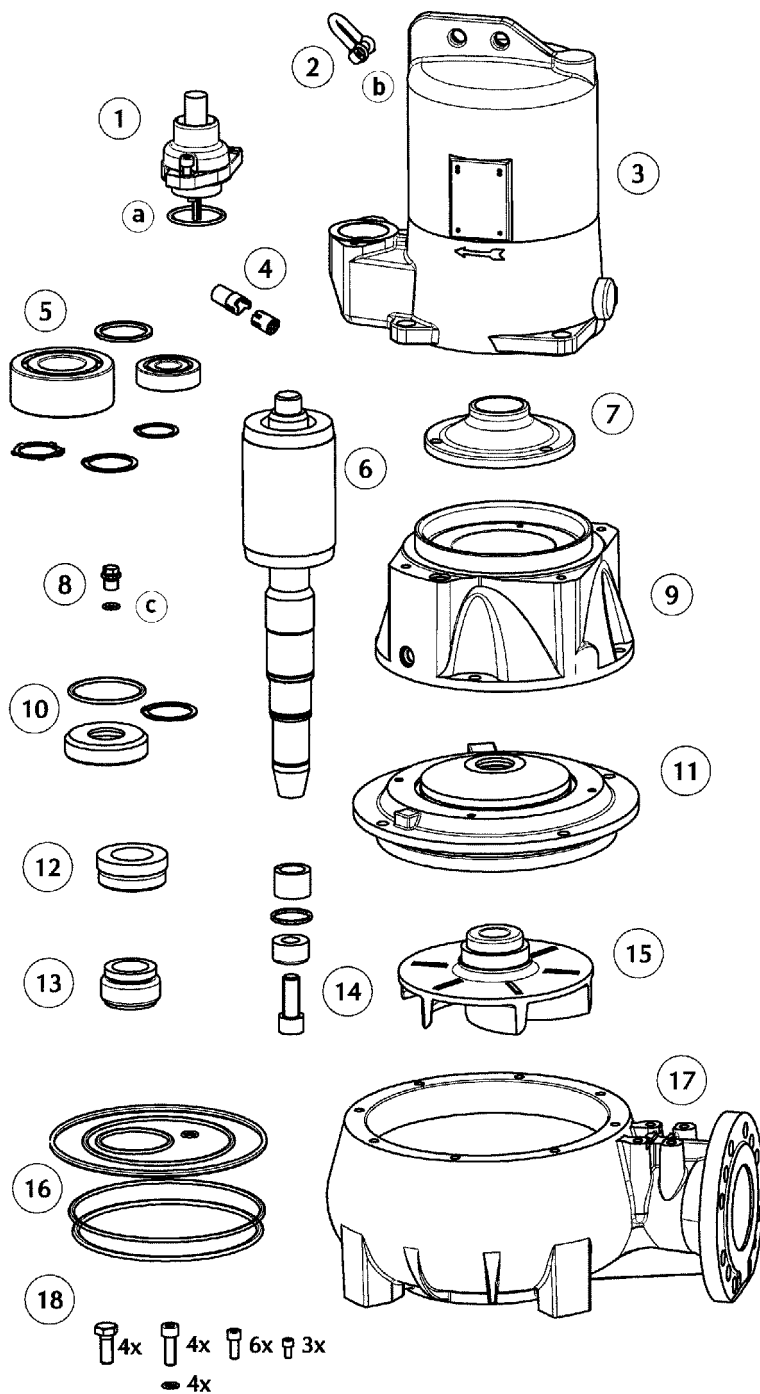
**MULTIFREE 10 - 35**

Ersatzteile - Spare parts - Pièces de rechange - Reserveonderdelen - Parti di ricambio - Reservedele - Reservdelar  
 Varaosat - Części zamienne - Náhradní díly - Alkatrészek - Piese de schimb - Запасные части - 备件



①	Leitung	Cable	
	10 M		<b>JP46259</b>
	EX, 10 M		<b>JP45469</b>
	EX, 15 M		<b>JP45583</b>
	EX, 20 M		<b>JP45584</b>
②	Schäkel	Shackle	<b>JP45904</b>
③	Stator + Gehäuse	Stator + Housing	
	25/2		<b>JP44008</b>
	35/2		<b>JP46211</b>
	10/4, 15/4, 25/4		<b>JP47042</b>
	35/4		<b>JP47045</b>
④	Steckverbinder	Connector	<b>JP46572</b>
⑤	Lagersatz	Bearing set	<b>JP46214</b>
⑥	Rotorwelle	Rotor shaft	
	25/2		<b>JP47038</b>
	35/2		<b>JP47039</b>
	10/4, 15/4, 25/4		<b>JP47040</b>
	35/4		<b>JP47041</b>
⑦	Lagerkammer	Bearing housing	<b>JP46720</b>
⑧	Wellenabdeckung	Shaft cover	<b>JP47043</b>
⑨	Ölschraube	Oil screw	<b>JP46046</b>
⑩	Laufradbefestigung	Impeller fixation	<b>JP47059</b>
⑪	Laufrad	Impeller	
	10/4 CW1		<b>JP46776</b>
	15/4 BW1, 15/4 CW1		<b>JP46710</b>
	25/4 BW1, 25/4 CW1		<b>JP46711</b>
	35/4 BW1, 35/4 CW1		<b>JP46712</b>
	25/2 AW		<b>JP46713</b>
	35/2 AW		<b>JP46714</b>
	25/2 BW1		<b>JP46715</b>
	35/2 BW1		<b>JP46716</b>
⑫	Gleitringdichtung	Mechanical seal	<b>JP46567</b>
⑬	Dichtungssatz	Set of seals	<b>JP47077</b>
⑭	Pumpengehäuse	Pump casing	
	AW		<b>JP46719</b>
	BW1		<b>JP46718</b>
	CW1		<b>JP46717</b>
⑮	Schraubensatz	Screw set	<b>JP47076</b>
⑯	1l Öl	1l Oil	<b>JP48236</b>

a	10x O-Ring 38x3,5	<b>JP48109</b>
b	10x Splint / Cotter pins 1,6x20	<b>JP46182</b>
c	10x O-Ring 10x2,5	<b>JP48088</b>



①	Leitung 10 M EX, 10 M	Cable	<b>JP47179</b> <b>JP47180</b>
②	Schäkel	Shackle	<b>JP45904</b>
③	Stator + Gehäuse 55/4 75/4	Stator + Housing	<b>JP47142</b> <b>JP47143</b>
④	Steckverbinder	Connector	<b>JP46573</b>
⑤	Lagersatz	Bearing set	<b>JP47137</b>
⑥	Rotorwelle 55/4 75/4	Rotor shaft	<b>JP47151</b> <b>JP47152</b>
⑦	Lagerdeckel	Bearing cover	<b>JP47155</b>
⑧	Ölschraube	Oil screw	<b>JP46046</b>
⑨	Lagerkammer	Bearing housing	<b>JP47158</b>
⑩	Wellenabdeckung	Shaft cover	<b>JP47181</b>
⑪	Trennflansch	Partition flange	<b>JP47159</b>
⑫	Gleitringdichtung	Mechanical seal	<b>JP46587</b>
⑬	Gleitringdichtung	Mechanical seal	<b>JP47140</b>
⑭	Lauf radbefestigung	Impeller fixation	<b>JP47182</b>
⑮	Lauf rad 55/4 75/4	Impeller	<b>JP47232</b> <b>JP47233</b>
⑯	Dichtungssatz	Set of seals	<b>JP47138</b>
⑰	Pumpengehäuse	Pump casing	<b>JP46723</b>
⑱	Schraubensatz	Screw set	<b>JP47139</b>
⑲	1l Öl	1l Oil	<b>JP48236</b>

a	10x O-Ring 47x3,5	<b>JP48110</b>
b	10x Splint / Cotter pins 1,6x20	<b>JP46182</b>
c	10x O-Ring 10x2,5	<b>JP48088</b>